

SYDNEY

SYDNEY got its name due to its qualities – warm, inviting and a bit different.

It is a slightly corrected semi aniline leather that gets its lovely expression from the soft and flexible structure.

The strong finish of the leather creates a great leather for both the private and contract market.

SYDNEY has always been a popular leather due to its qualities and none less than a whopping 38 different colours.

*Notice that colors and grain is a guideline. There may be a colour and grain difference from the shown picture to the hide you receive, due to the variation in colour appearances on screens.

Approx. size: 4,2 m2.

Thickness: 0,9-1,1 mm

Raw material: Australian, New Zealand or European rawhides

Tanning: Chrome



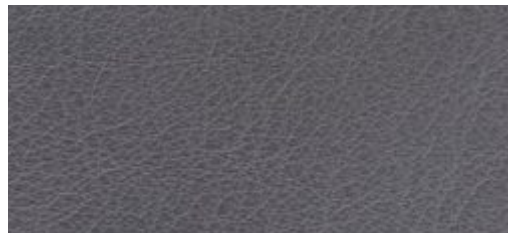
SY1991 Jade Grey



SY3394 Nature



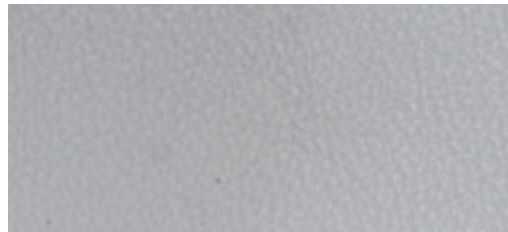
SY2270 Haze



SY4010 Anthracite



SY2104 Elephant



SY2523 Light Grey



SY2208 Plaster



SY4049 Slam



SY5529 Nougat Brown



SY0188 Sand



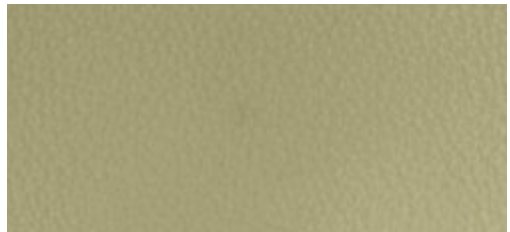
SYK4050 Kelato Sahara



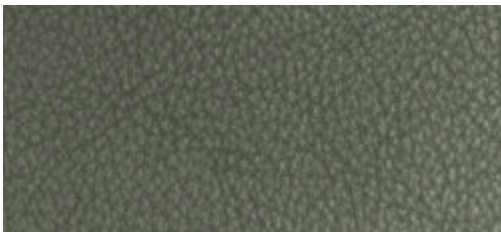
SY6367 Lemon



SY6699 Apple



SY2535 Moss Green



SY3360 Army Green



SY2561 Forest Green



SY5454 Green



SYK0301 Kelato Brazil



SY5004 Choko



SY0282 Dark Brown



SYK0703 Kelato Brandy



SYK0654 Kelato Brown



SYK0513 Kelato Calvados



SY5478 Cognac



SY6688 Orange



SY2511 Clear Red



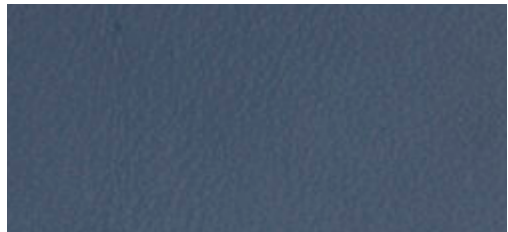
SY6622 Dark Red



SY0423 Oxblood



SY0100 Black



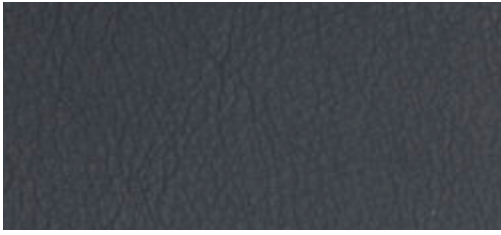
SY2702 Sky Blue



SY6644 Sea Blue



SY0540 Royal Blue



SY7101 Midnight Blue



SY0111 White



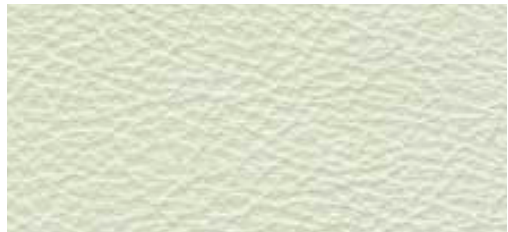
SY0140 Ice



SY3380 Stone



SY0461 Porcelain



SY5432 Beige