

Quadro coffee station

a product by **Cube Design**

Phone no: +45 86 98 74 11
Email: cube@cube-design.dk
Website: www.cube-design.dk/en
Version: 14-07-2023



Assembly manual for Quadro coffee station



It is strongly recommended, to be a two-man job, when assembling the coffee station!

Coffee station parts list:

1. 1 x Tabletop
2. 2 x Sides
3. 1 x Top plate
4. 1 x Back plate
5. 4 x Adjustable levelling feet
6. 1 x Quadro bookcase
7. 8x30 mm dowels
8. 5x25 mm screws
9. Minifix

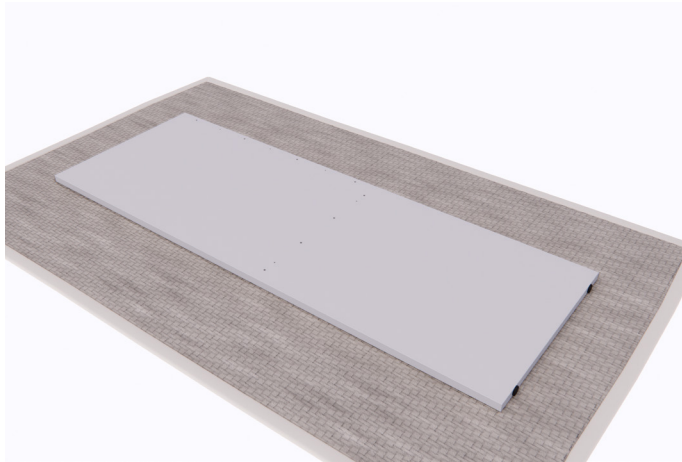
CUBE
DESIGN

Cube Design A/S

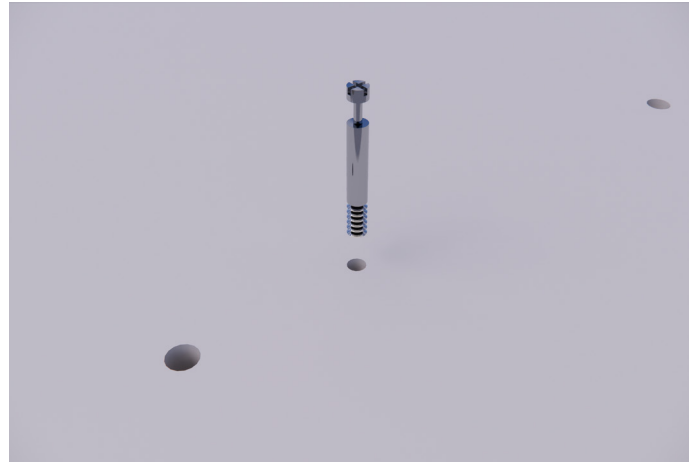
Vadstedvej 212 | DK-8450 Hammel | Phone no.: +45 86 98 74 11 | www.cube-design.dk/en | cube@cube-design.dk

Assembly manual for Quadro coffee station

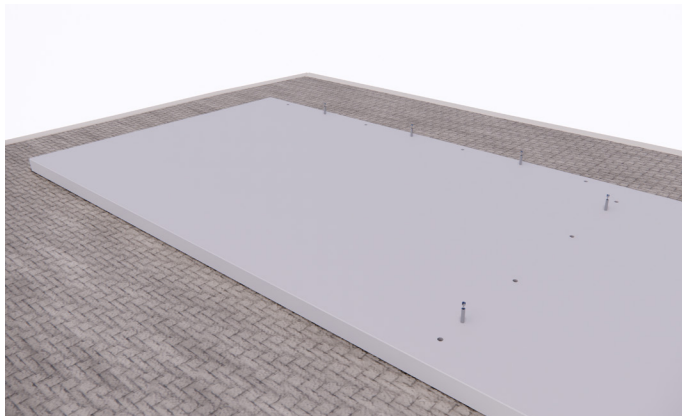
Step 1: Place the side of the coffee station on a clean non-scratching soft surface, i.e., a clean rug. Take care not to scratch the surface.



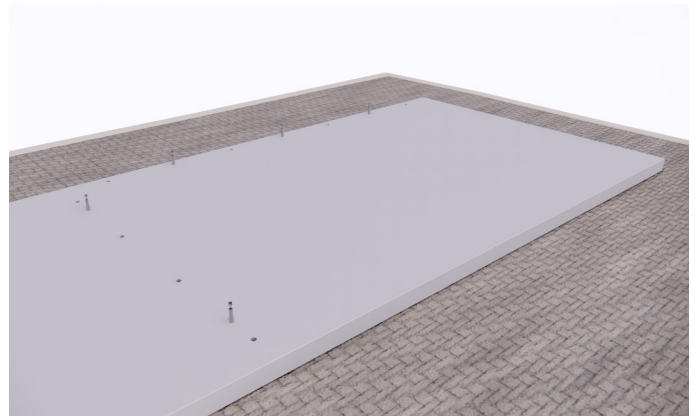
Step 2: Use a screwdriver to mount the minifix in the pre-drilled holes. Make sure to use the correct holes - **check where the dowels go.**



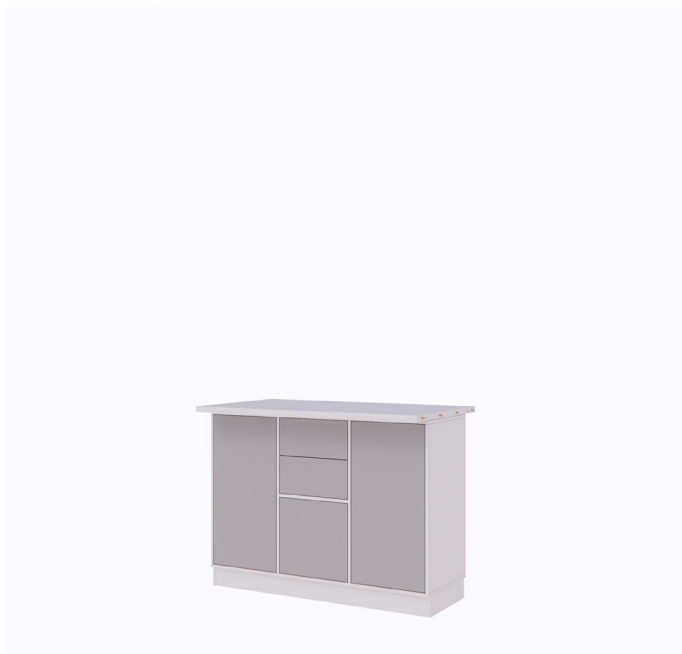
Step 2: Mount the minifix in the pre-drilled holes.



Step 3: Repeat with the other side.



Step 4: Place the cabinet on a level surface. Place the tabletop on the centre of the cabinet.



Step 5: Mount the left side.



CUBE
DESIGN

Cube Design A/S

Vadstedvej 212 | DK-8450 Hammel | Phone no.: +45 86 98 74 11 | www.cube-design.dk/en | cube@cube-design.dk

Assembly manual for Quadro coffee station

Step 5: Lock both minifixes under the tabletop.



Step 6: Lock all minifixes **while still supporting the back plate until the right side is mounted.**

Step 6: Mount the back plate. **In this step a helping hand is required to supporting the back plate until the right side is mounted.**

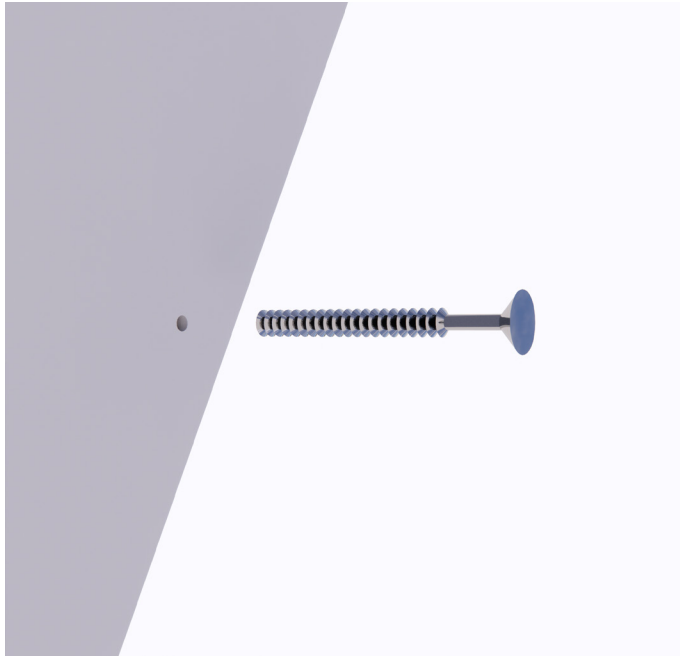


Step 7: Mount the right side and lock all minifixes under the tabletop and in the back plate.



Assembly manual for Quadro coffee station

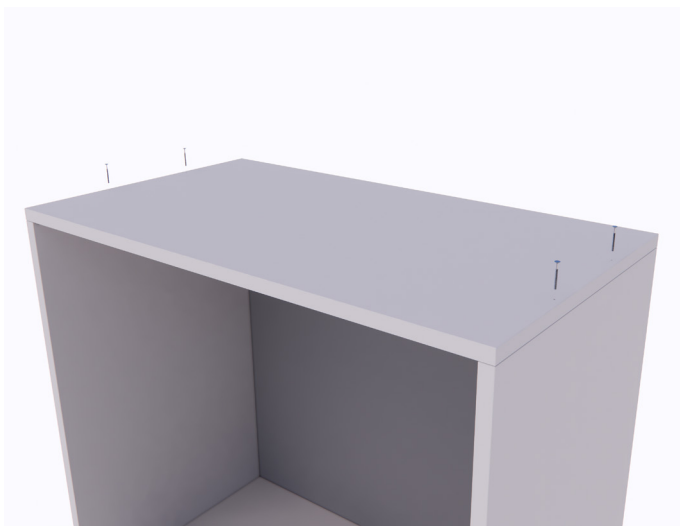
Step 8: Screw the back plate to the tabletop through the pre-drilled holes.



Step 9: Mount the top plate. Lock all minifixes from behind.



Step 10: Fasten the top plate with screws from above through the pre-drilled holes.

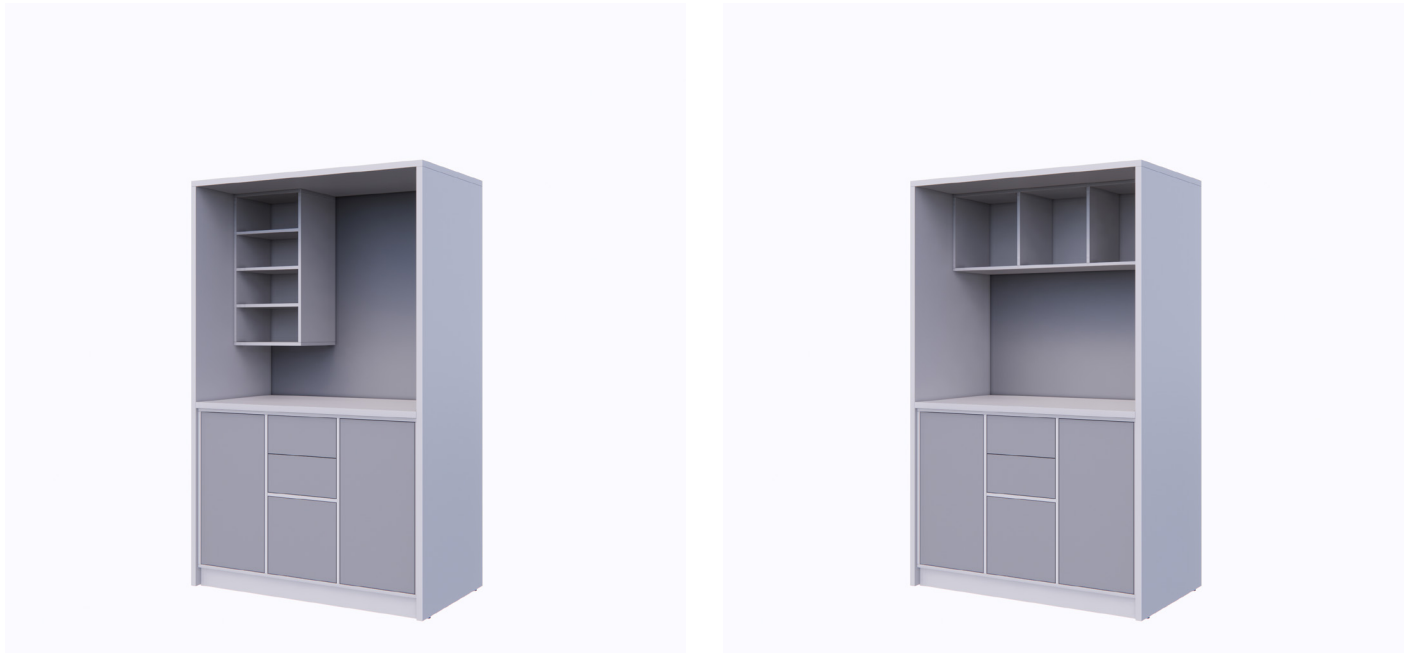


Step 11: Pull the cabinet out and adjust the height so that the cabinet comes up to the tabletop. When the cabinet is positioned as desired, it is recommended to fix the cabinet and side pieces with screws from inside the cabinet.



Assembly manual for Quadro coffee station

Step 12: The wall-mounted bookcase can be mounted anywhere you like on the back plate of the coffee station. Pre-drill holes in each corner of the cabinet, through the wall bracket, and into the back plate of the coffee station. Mount using standard wood screws.



The coffee station is now assembled, and you can place it where you like.



Enjoy the coffee station.

CUBE
DESIGN