

Coffee Station

Designed by Cube Design Team



CUBE
DESIGN

WANT TO CREATE A UNIQUE

COFFEE EXPERIENCE?

The Quadro coffee station is a functional piece of furniture that combines practical details and organization with an exclusive, stylish design – a perfect piece of furniture for workplaces who want to create an extraordinary coffee experience for employees and customers. Decorate the coffee station with your favorite coffee machine and place the furniture centrally in the reception or at the office.

The furniture has a flexible design so you can create your own personal interior. Assemble the materials and colors that fit right in with your decor. With a coffee station from Cube Design, you get Danish design of the highest quality, produced in our own factory in Denmark.



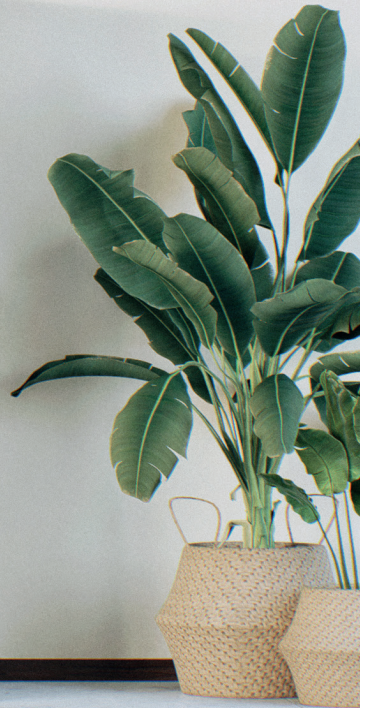
CUBE x Farm Mountain

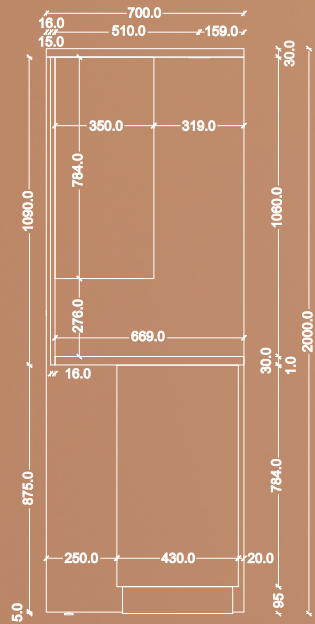
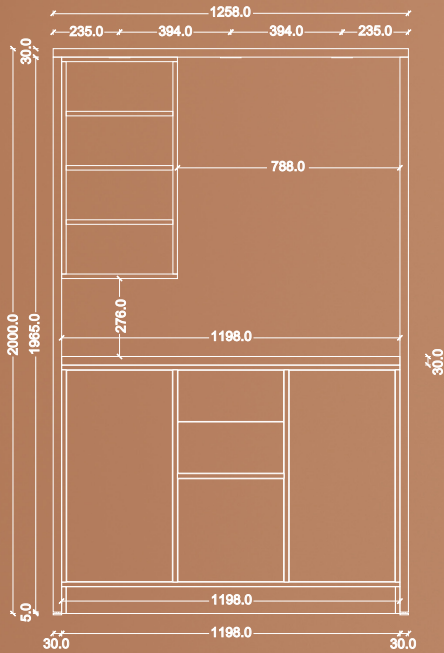
Did you know that Cube Design in collaboration with Farm Mountain Denmark has produced its own premium coffee? Enjoy it in one of our showrooms.

Zürich Grand Hotel
est. 1853

Reception







Dimensions

The coffee station is made of a solid 30 mm bridge with a durable tabletop, so you get plenty of space to install a barista machine, kettle and whatever else you need in your coffee station.

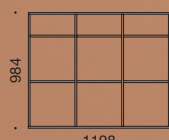
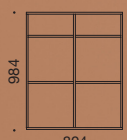
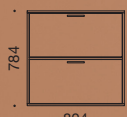
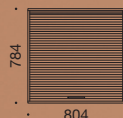
More variants

The Quadro coffee station comes in either 2, 3 or 4 room width.



Your personal interior design

The coffee station fits together with our Quadro series, so you can decorate the furniture with standard Quadro storage according to your needs.



CoffeeStation? FoodStation? BeerStation?



Get creative with designing your
own **UniqueStation**