

# DUET®

**Type:** Aniline leather

**Thickness:** 1.1 – 1.3mm

**Size:** 4.0 – 5.0 m<sup>2</sup>

**Origin:** European rawhide, typically from Italy, Germany, Austria, Switzerland and Scandinavia

**Surface:** Smooth grain structure of nubuck on one side and the textured surface of suede on the other

**Finish:** Nubuck side: Natural with a water repellent surface protection.

**Suede side:** No finish

**Tannage:** Chrome

**Dye:** Water-based aniline dye

**Particular attributes:** A unique double-sided, two-in-one leather. With a velvety-soft feel of nubuck on one side and the textured depth of suede on the other side. There's a structural connection between the two surfaces and colours that correspond via tone-on-tone

**Certification:** OEKO-TEX®

**Carbon Footprint:** 1 M<sup>2</sup> Sørensen leather = 8.7 kg CO<sub>2</sub>e

**PFAS:** Free from PFAS and phthalates

**LWG:** Is produced according to Leather Working Groups (LWG) standards.



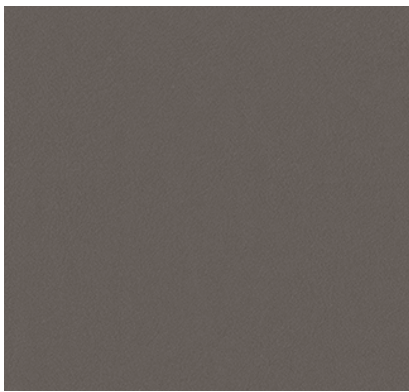
# SØRENSEN



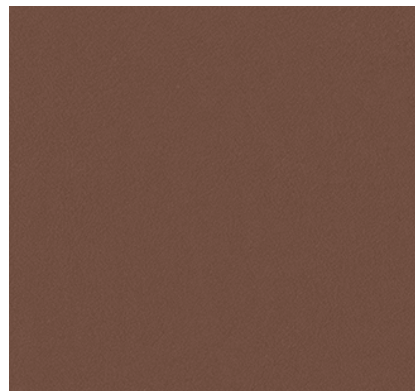
**Charcoal - 30236**



**Dark Brown - 30241**



**Mink - 30237**



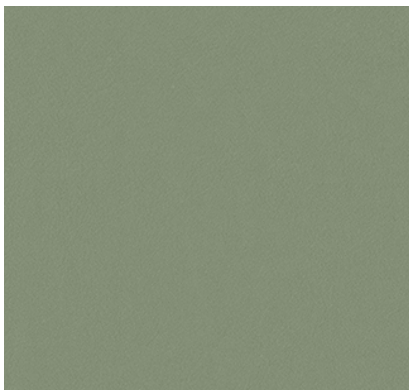
**Cedar - 30238**



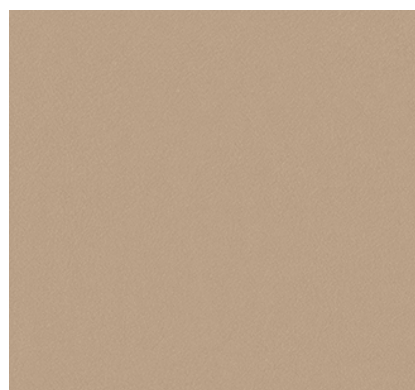
**Lavender - 30231**



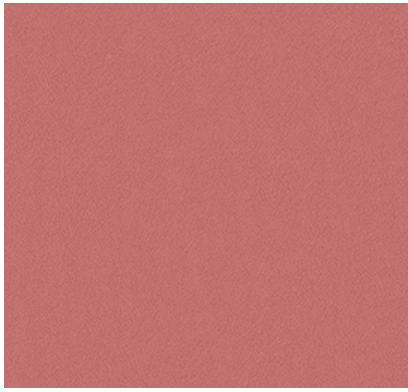
**Mist Grey - 30230**



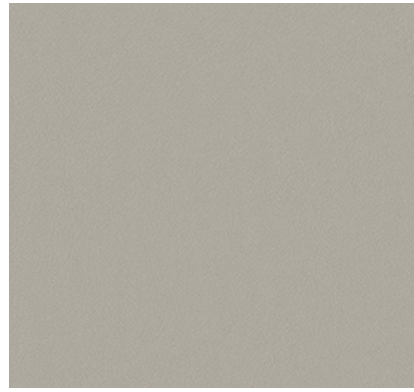
**Jade - 30235**



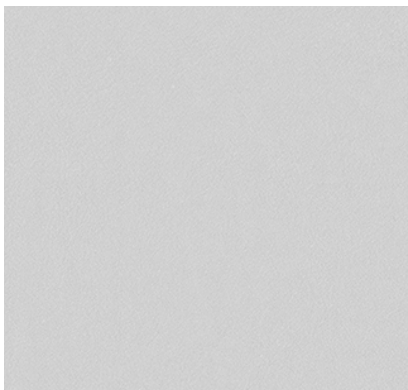
**Gold - 30239**



**Coral - 30234**



**Moon - 30232**



**Ivory - 30240**